

CERTIFICATE OF LOCATION OF GOVERNMENT CORNER

County of Anoka

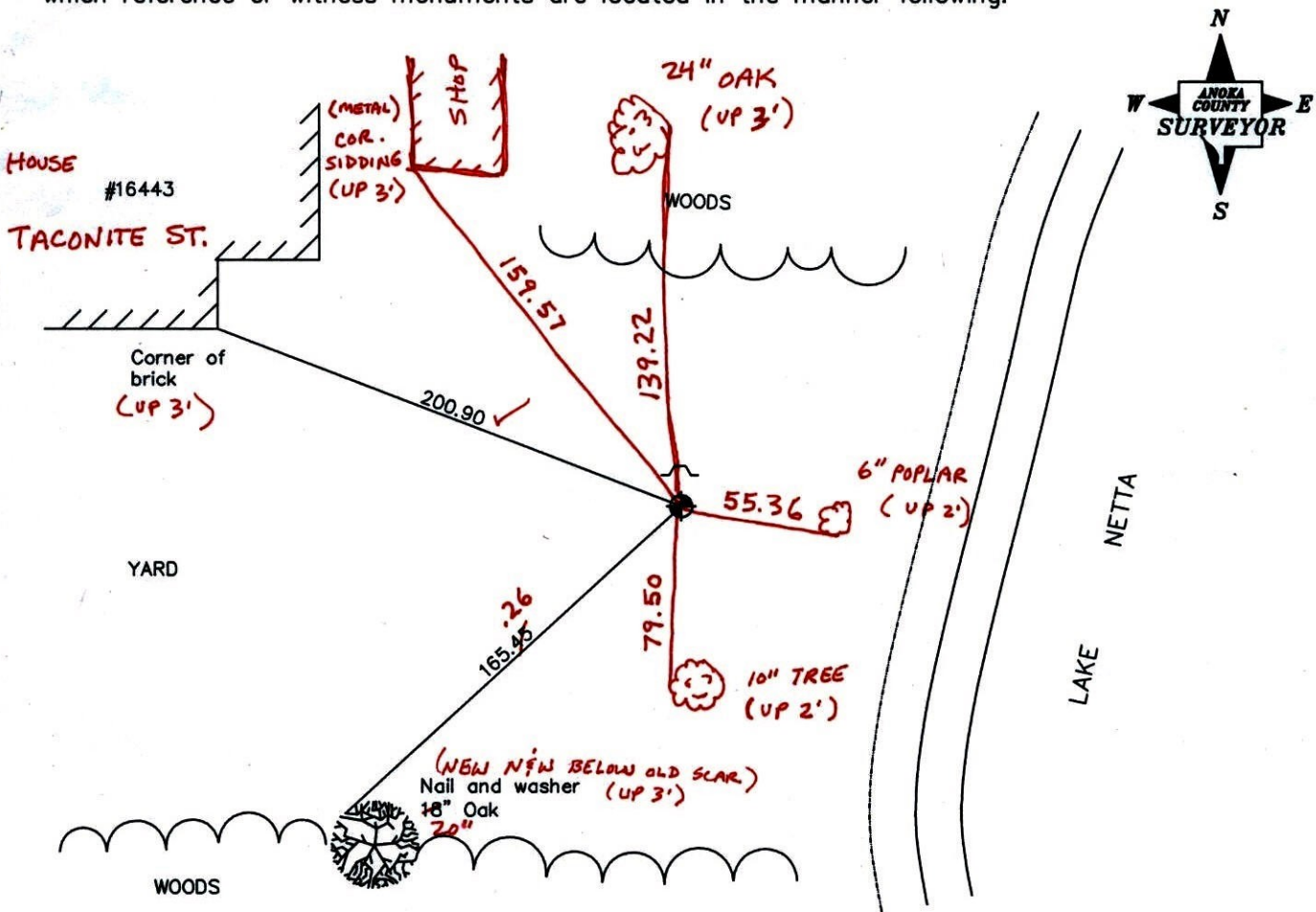
State of Minnesota

Witness Corner of Sec. 16 Township 32 Range 23
on North line of NE1/4

I hereby certify that on the 12th day of May, 1977, I found the described corner which was evidenced by area resurvey

and I further certify that to perpetuate the location of said corner, I did, at the exact location thereof, place a permanent marker consisting of a cast iron monument w/ SIGN & POST ON N. SIDE (DOWN 0.2' ±)

which reference or witness monuments are located in the manner following:



BK - SS

T/T

Revised date

12/31/90
8/23/96
4-5-11

N.A.D. 1983 Coordinates
(1996 adjustment)

County Project Coordinates
Northing 185461.4881
Easting 515095.7535

State Plane Coordinates
Y _____
X _____

Date 1/31/02

CERTIFICATE OF LOCATION OF GOVERNMENT CORNER

County of Anoka

State of Minnesota

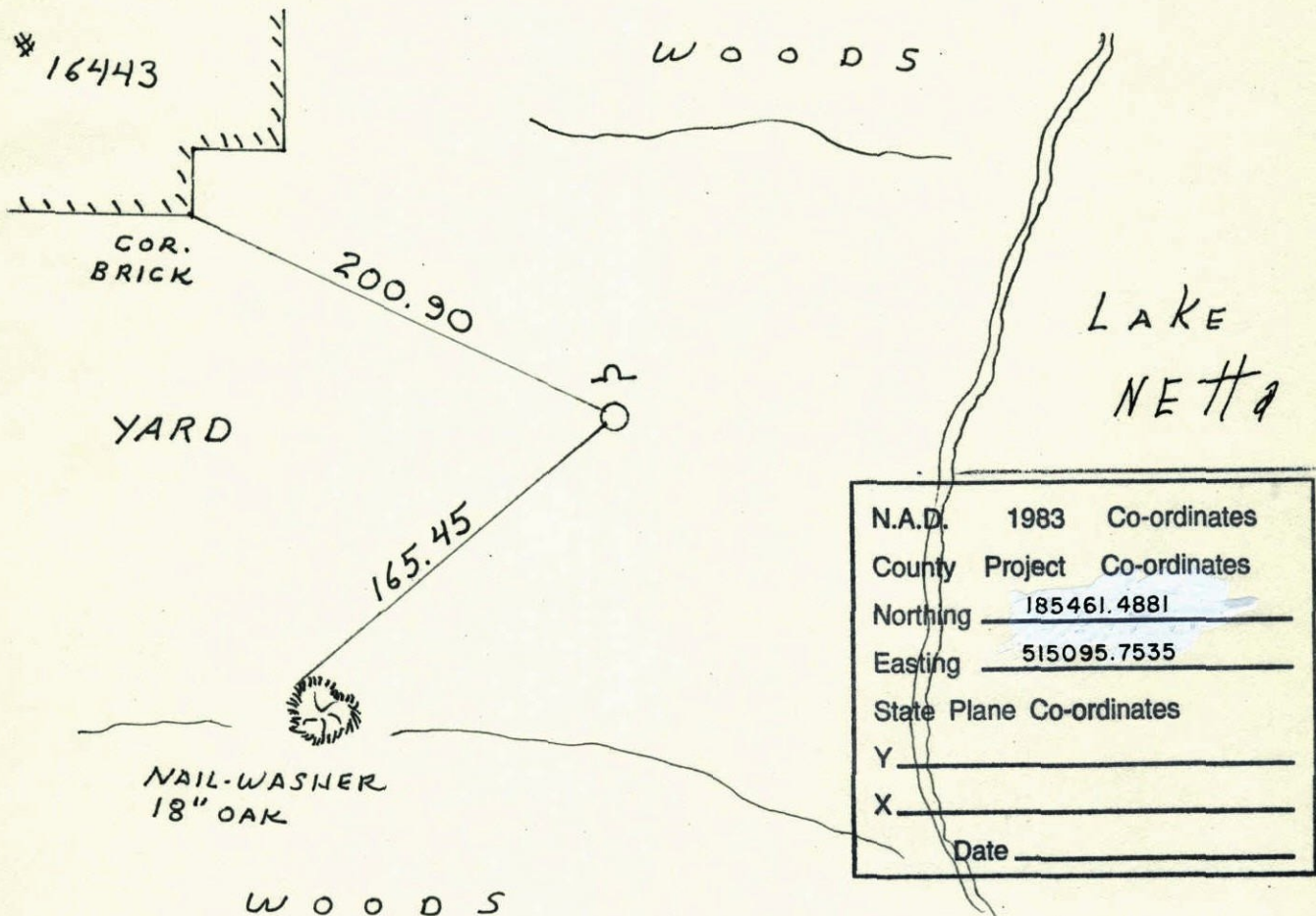
WITNESS Corner of Sec. 16 Township 32 Range 23

ON N. LINE OF NE 1/4

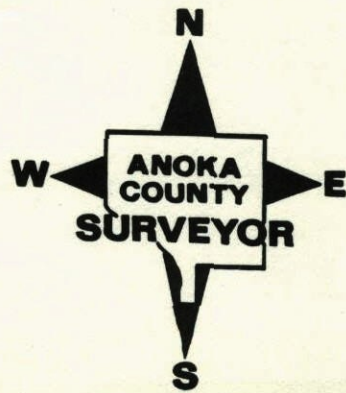
I hereby certify that on the 12 day of MAY, 1977, I found the described corner which was evidenced by RESURVEY

and I further certify that to perpetuate the location of said corner, I did, at the exact location thereof, place a permanent marker consisting of CAST IRON MONUMENT

which reference or witness monuments are located in the manner following:



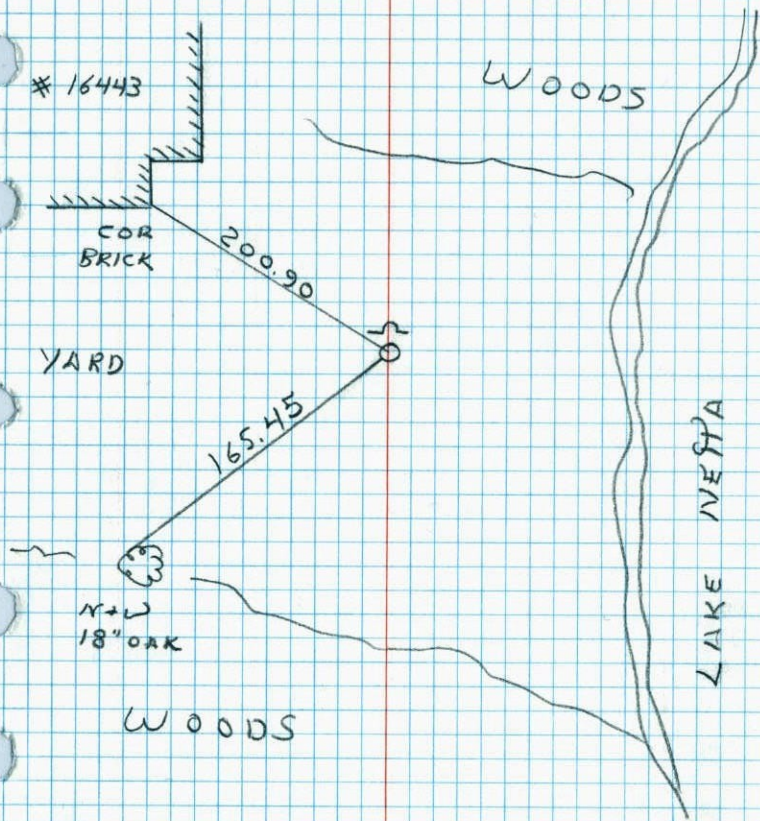
Revised date	Revised date	Revised date
12-31-90		
8-23-96		



WC ON N LINE OF NE 1/4 SEC. 16 T32 R23

RETIED C.I. MONUMENT

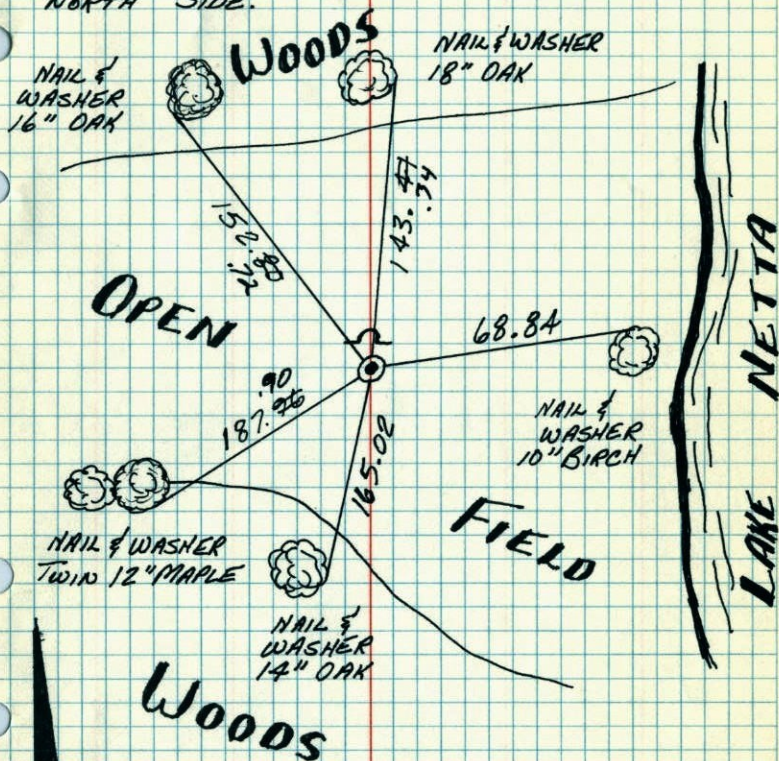
8-23-96
 J. ANDERSON
 M. DOLL



W.C. ON NORTH LINE OF NE 1/4

SEC 16 - T32 - R23

SET CAST IRON MONUMENT FROM AREA RESURVEY.
 CAST IRON FLUSH WITH SIGN & POST ON
 NORTH SIDE.



MAY 12-'77

H. LARSON

B. GUETZKO

J. BOETTCHER

Tie Check

June 12, 1977

D. Doh

R. Stephens

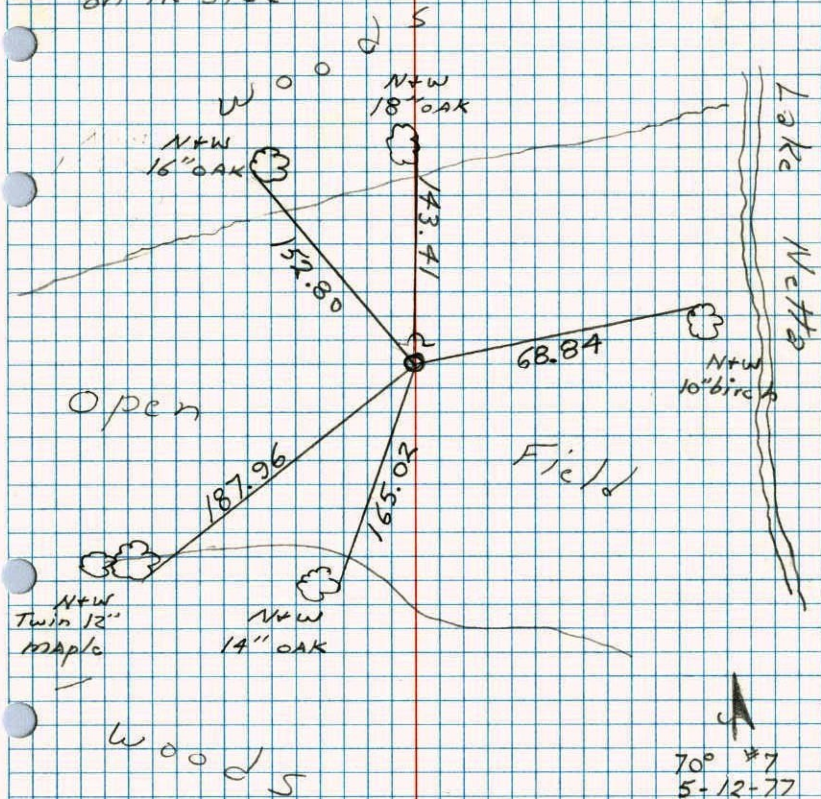
M. Straw

TEMPERATURE CORRECTED ROLAND W. ANDERSON
 AND HORIZONTALLY COUNTY SURVEYOR
 TAPED MEASUREMENTS ANOKA COUNTY, MINNESOTA

W.C. on North Line of NE 1/4 Sec. 16

T32 R23

Set cast iron monument from area
resurvey. C.I. flush with sign & post
on N side



70° #7
5-12-77
H. Larson
S. Brann
J. Boettcher